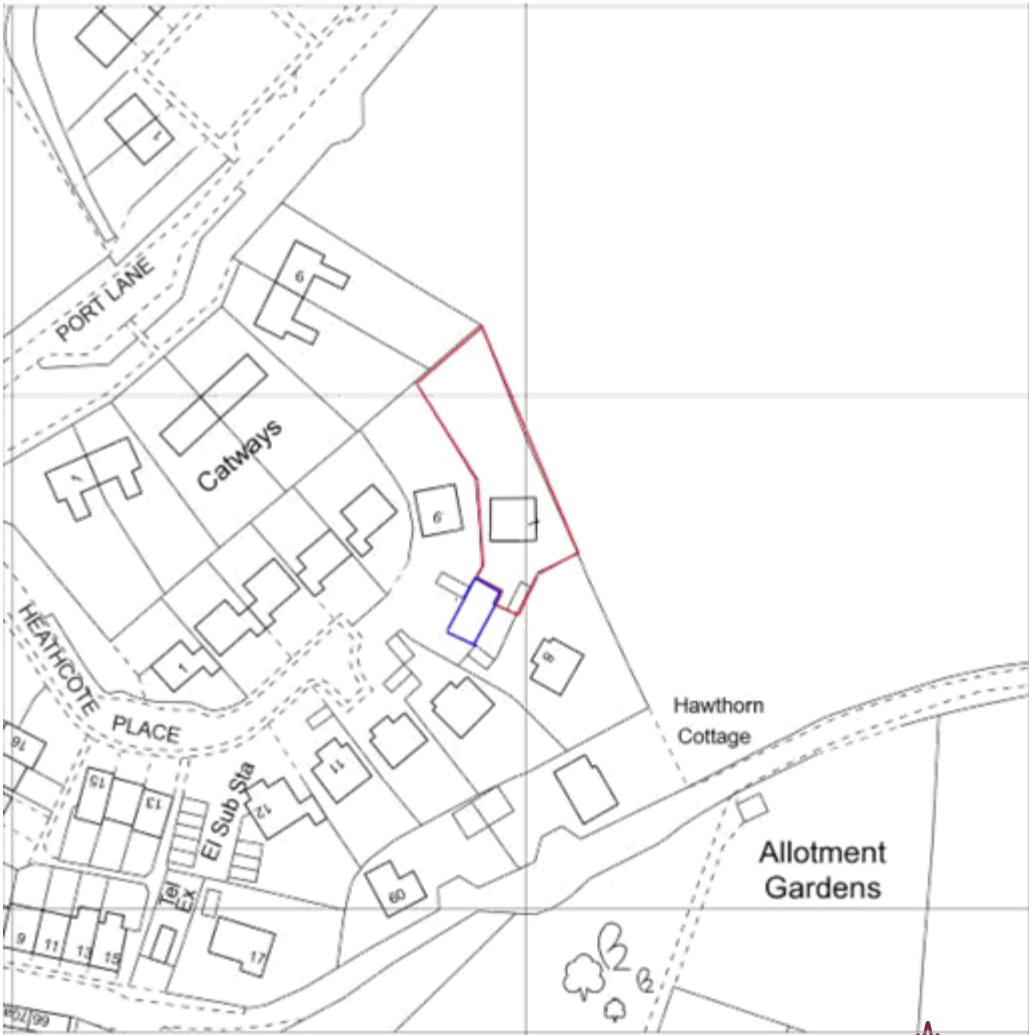


24/00224/HOU- Meadows End, 7 Heathcote Place, Hursley, Winchester, Hampshire, SO21 2LH

Extension to garage block and loft development to form ancillary office and habitable space.



Location Plan



Aerial Photograph



Aerial Photograph



Site Plan Existing & Proposed

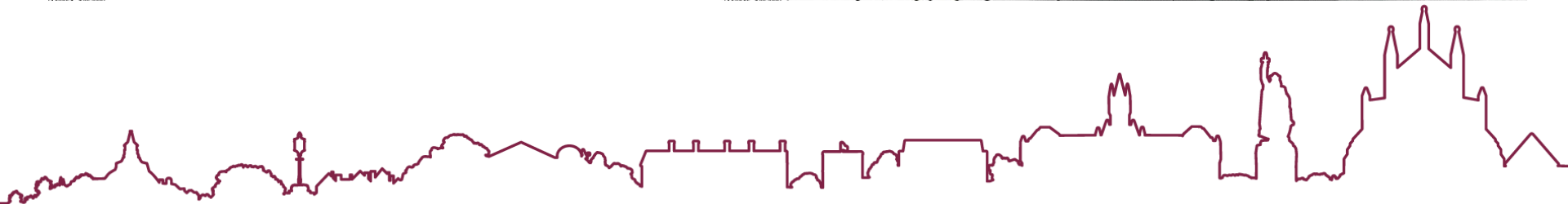
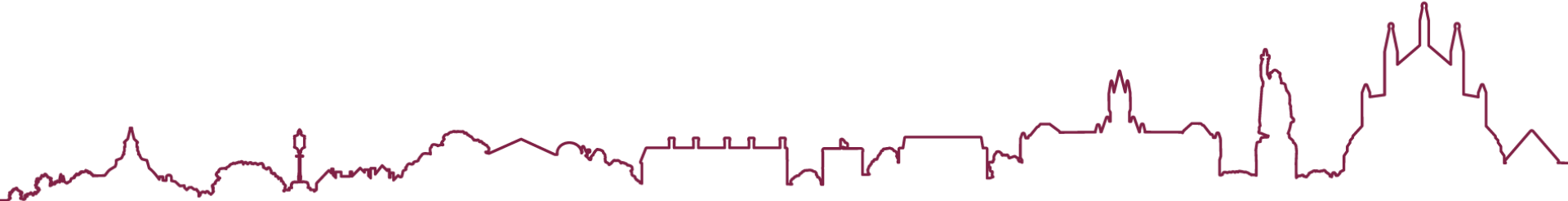
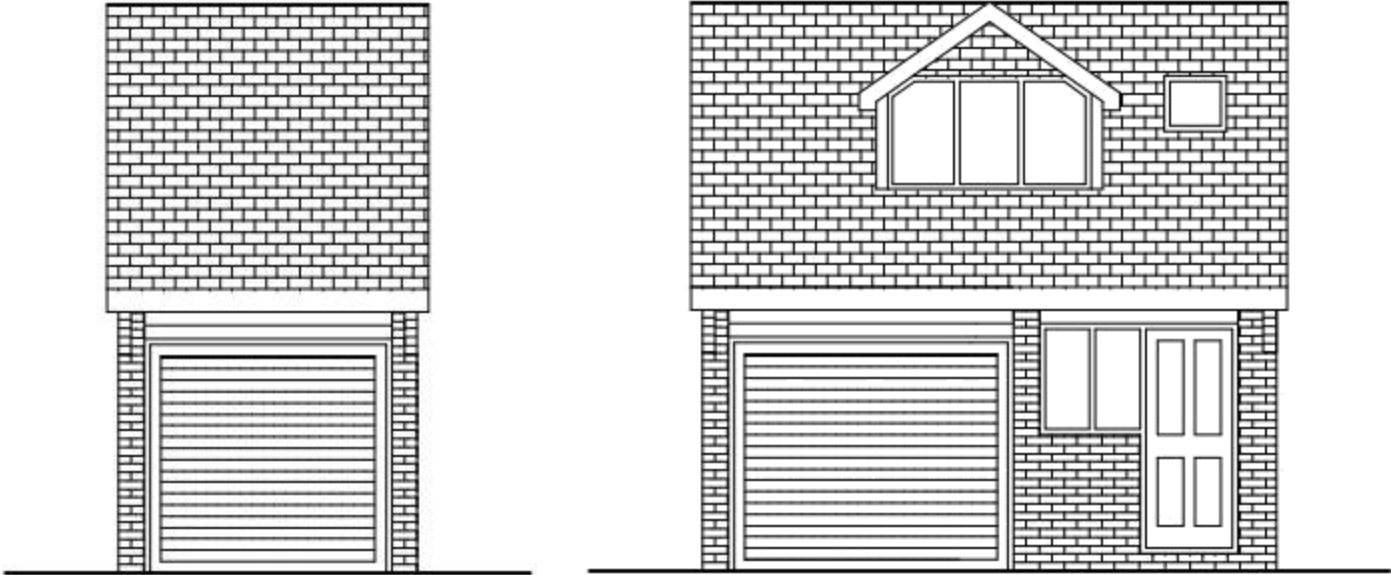


Photo looking northeast from the Heathcote Place



Northeast Elevation- Existing and Proposed



Southwest Elevation- Existing and Proposed

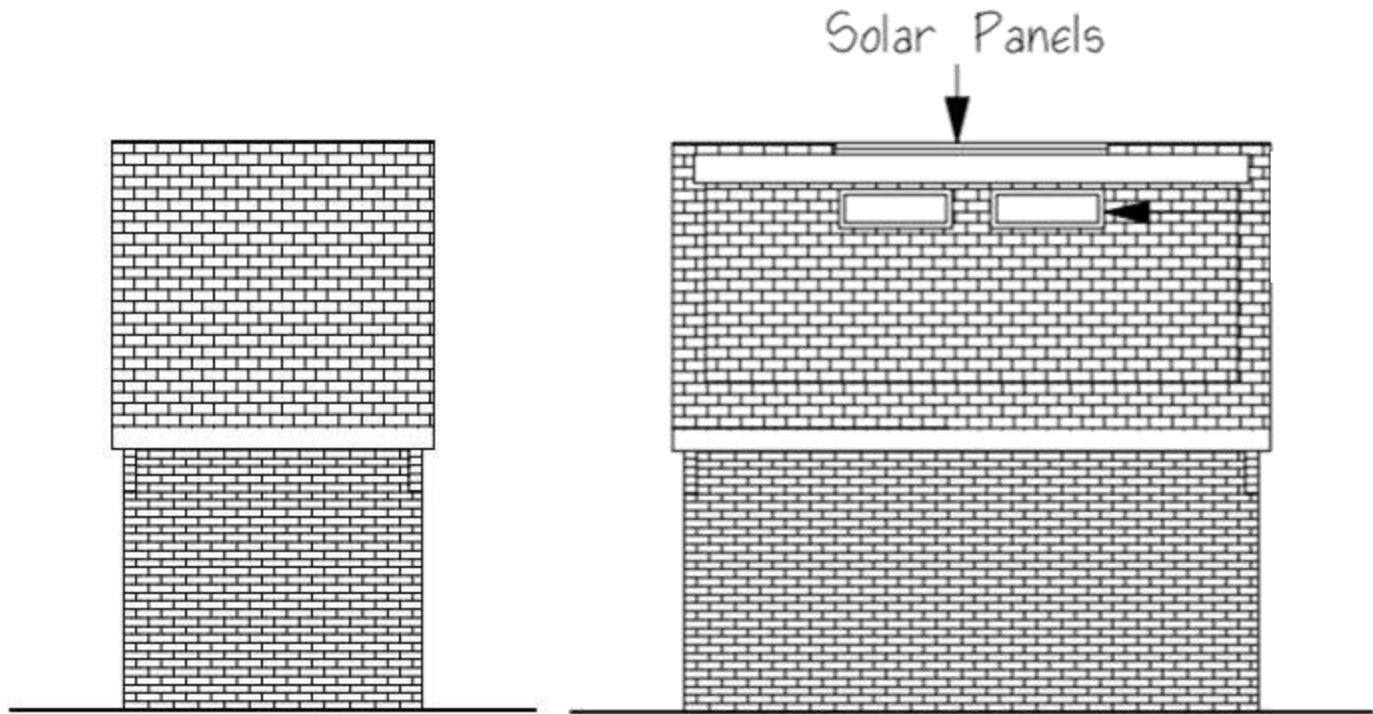


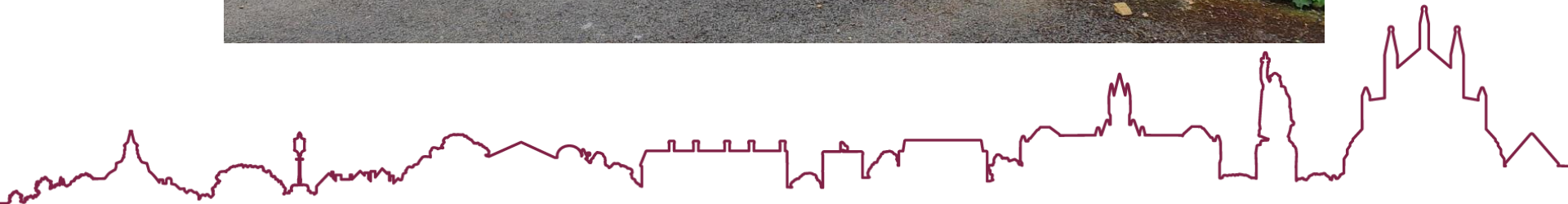
Photo Looking towards site from the private access to site and neighbouring properties



Photo Looking towards site from the private access to site and neighbouring properties



Photo looking towards No. 8 from private access



Northeast Elevation- Existing and Proposed

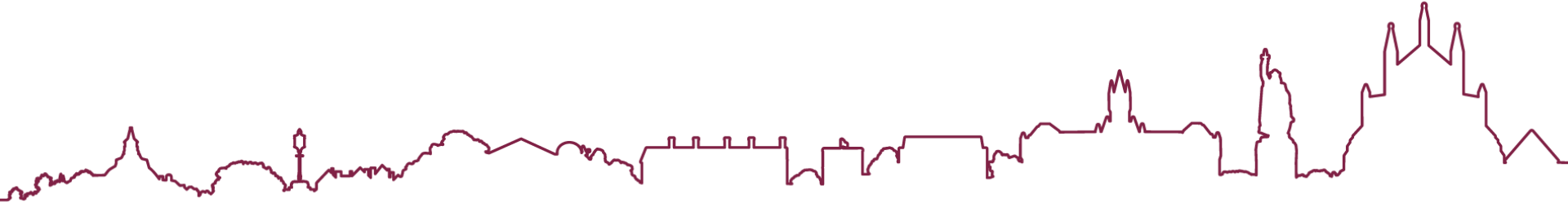
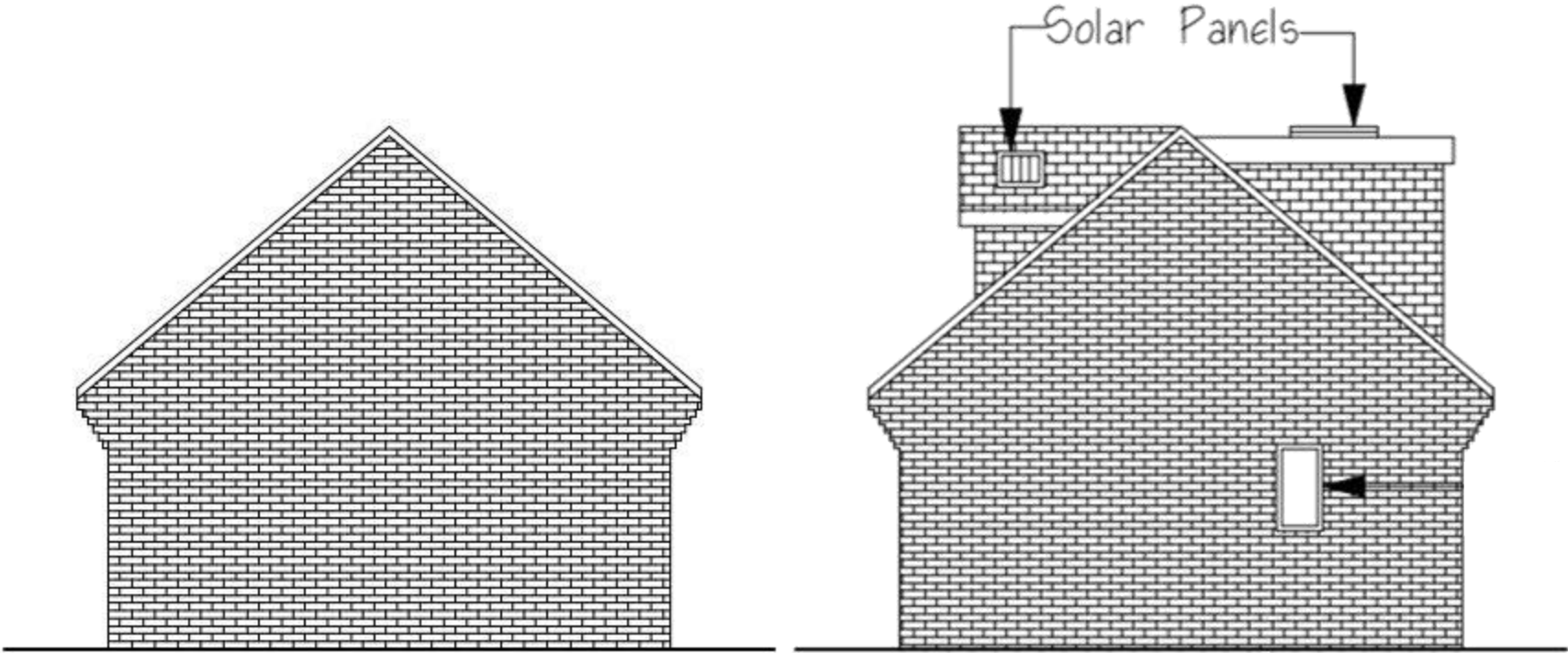
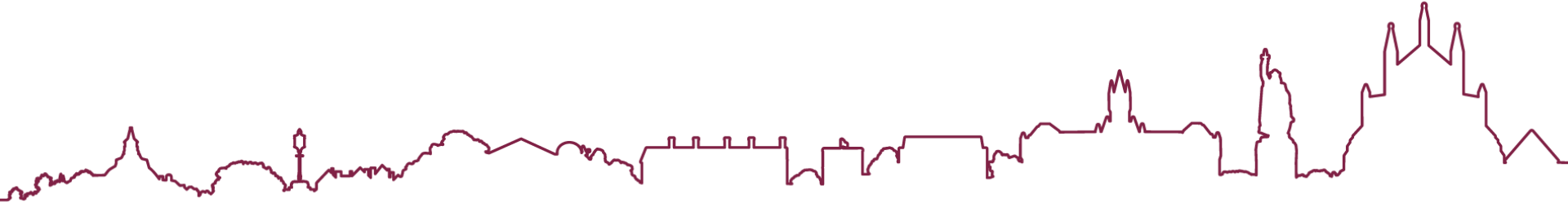
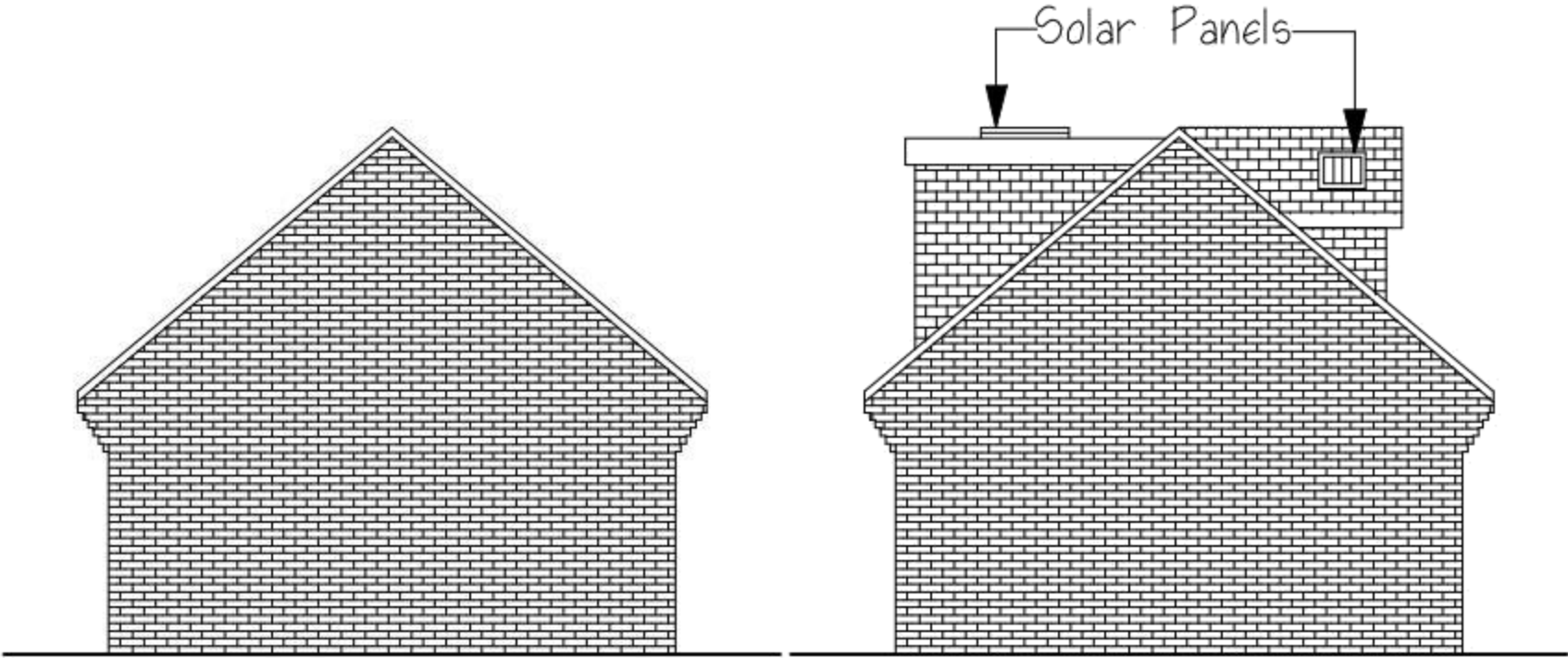


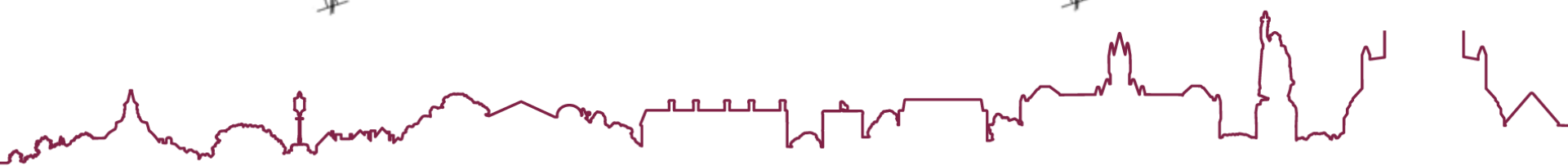
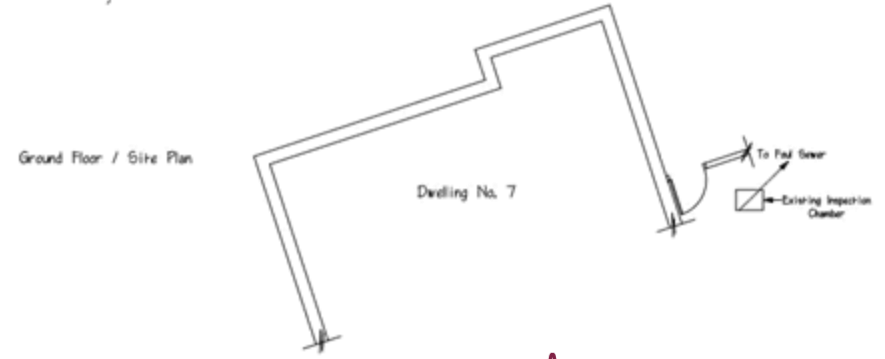
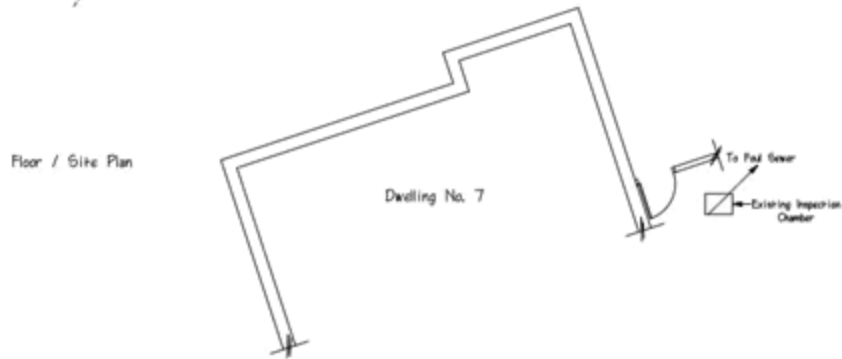
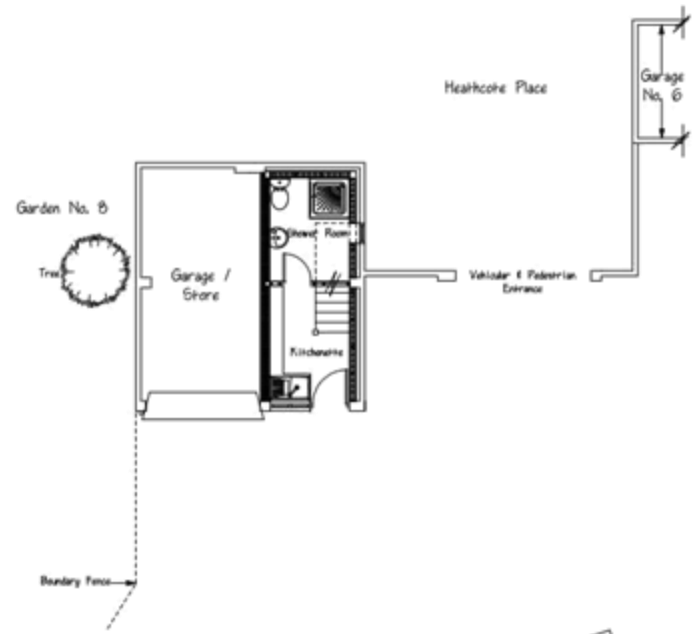
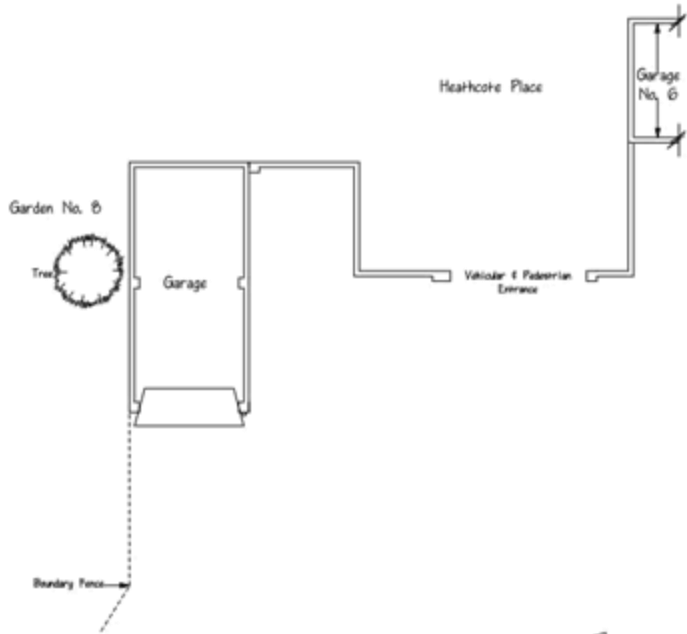
Photo looking towards No. 8 from private access



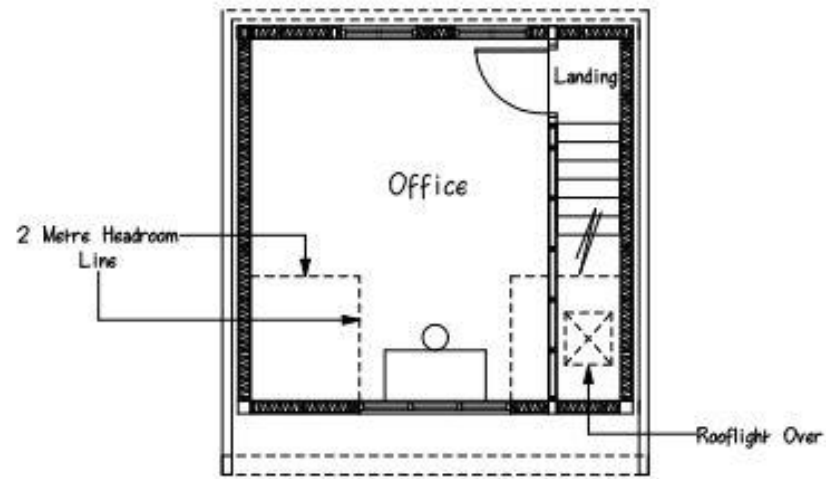
Northeast Elevation- Existing and Proposed



Existing and Proposed Ground Floor Plans



Proposed First Floor Plans



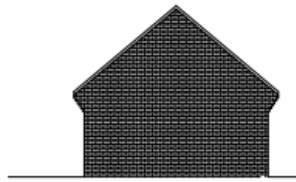
First Floor Plan



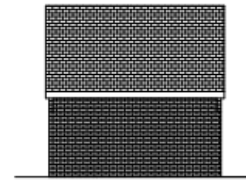
15/02827/FUL Approved Plans



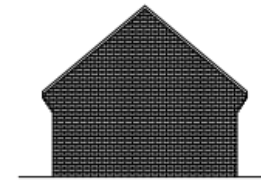
North East



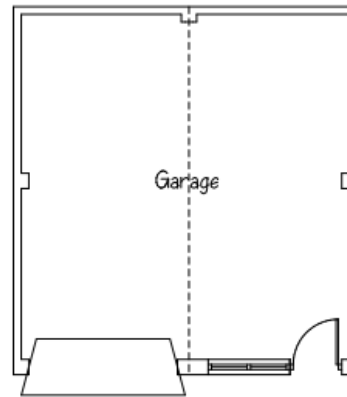
North West



South West



South East



Garage Floor Plan

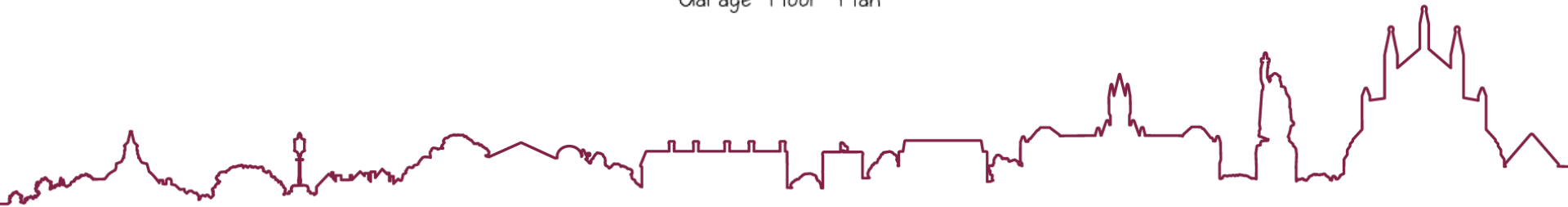


Photo looking to the northeast from the access to the private access



Conclusion

